

ORDINANCE 2022-3

AN ORDINANCE OF THE TOWNSHIP OF LEHIGH, COUNTY OF NORTHAMPTON AND COMMONWEALTH OF PENNSYLVANIA ESTABLISHING THE SPEED LIMIT OF 30 MILES PER HOUR ON WEST WALKER ROAD FROM COTTONWOOD ROAD TO THE MOORE TOWNSHIP MUNICIPAL LINE.

WHEREAS, the Lehigh Township Police Department conducted a traffic investigation and study, in accordance with the Pennsylvania Motor Vehicle Code to determine the appropriate speed limit on West Walker Road; and

WHEREAS, pursuant to that investigation and study, the Lehigh Township Police Department recommended establishing a maximum speed limit of 30 miles per hour on West Walker Road. A true and correct copy is attached as Exhibit "A"; and

NOW THEREFORE, BE IT ENACTED AND ORDAINED, AND IT IS HEREBY ENACTED AND ORDAINED by the Board of Supervisors of Lehigh Township, Northampton County, Pennsylvania, as follows:

SECTION 1. Whereas Clauses

All "Whereas" clauses are incorporated herein by reference.

SECTION 2. Speed Limit Established.

The following maximum speed limits are hereby established:

<u>HIGHWAY</u>	<u>PORTION</u>	<u>MAXIMUM SPEED LIMIT</u>
West Walker Road	Cottonwood Road to Moore Township line	30 miles per hour

SECTION 3. Posting of Signs.

The Township shall replace the existing speed limit signs with the appropriate new speed limit signs, which are currently erected in accordance with the regulations adopted by the Pennsylvania Department of Transportation.

SECTION 4. Violation.

Any person who operates a vehicle in violation of this Ordinance and the official signs duly erected pursuant to this Ordinance shall be prosecuted in accordance with the terms and provisions of the Pennsylvania Motor Vehicle Code.


SECTION 5. Repealer.


All Ordinances and parts of Ordinances inconsistent herewith, be and the same are hereby repealed.

IN WITNESS WHEREOF, this Ordinance has been enacted and ordained this 22<sup>nd</sup> Day of November, 2022.

Board of Supervisors of  
Lehigh Township, Northampton County,  
Pennsylvania

ATTEST:

  
\_\_\_\_\_  
Chairman

  
\_\_\_\_\_  
Secretary

# Exhibit A



# Lehigh Township Police Department

Scott Fogel  
Chief of Police  
1043 Municipal Road  
Walnutport, PA 18088



---

Lehigh Township Board of Supervisors  
1069 Municipal Rd.  
Walnutport, PA 18088

October 11, 2022

Dear Board of Supervisors,

Below is the requested speed study for West Walker Road. Based on the information collected below, I recommend the speed limit be posted at 30 mph.

### West Walker Road

West Walker Road is an asphalt roadway with no dividing marker between the lanes, and no fog lines on the sides of the roadway. West Walker Road is 21 feet wide, and consists of a mainly straight road with an elevation change significant enough to impede visibility of vehicles over the crest of the hill. West Walker Road is approximately .42 miles long from the intersection of South Cottonwood Rd to the township line with Moore Township. West Walker Road is currently not posted allowing for a default speed limit of 55mph. West Walker Road has several homes along the roadway as well as farms. There have been several traffic complaints of excessive speed on West Walker, as well as a posted 30mph speed limit on the Moore Township section of the roadway that caused the Township to look at the speed limit on the roadway. Using radar speed timing equipment, Lehigh Township Police conducted speed timing studies over an eleven (11) day period ending on August 30. The average speed northbound, from Cottonwood Rd. was 19.4mph, with the 85<sup>th</sup> percentile being 23.73mph. The southbound direction had an average speed of 23.01mph and an 85<sup>th</sup> percentile of 27.69mph. The studies are attached.

Additionally, Lehigh Township Police conducted a safe running speed on the roadway using an unmarked police vehicle. Due to the short distance of the roadway from end to end, as well the approach to the crest of a hill with hindered visibility of oncoming traffic over the crest, the maximum safe speed, driving in a normal capacity (non-emergency response), was 31.7 mph northbound and 31.6mph traveling southbound.

North		South	
24.3	mph	29.9	mph
26.9	mph	32.4	mph
26.2	mph	33.9	mph
30.3	mph	30.0	mph
30.8	mph	31.6	mph
31.2	mph	30.9	mph
30.1	mph	30.8	mph
30.7	mph	32.0	mph
30.9	mph	28.0	mph
31.7	mph	30.8	mph

Based upon this study I recommend the speed limit be reduced to 30mph. This is very close to the 85 percentile speeds currently being traveled upon West Walker Road. A 30mph speed limit also is consistent with the posted speed approaching the Township from the Moore Township section of West Walker Road.

Sincerely,

Scott M Fogel, Chief of Police



# Extended Speed Summary

W Walker (northbound), NB

*(From Cottonwood)*

Start: 2022-07-02

End: 2022-08-30

Times: 0:00-23:59

Violation Threshold: Speed Limit + 10

Speed Range: 1 to 150

## Overall Summary

Total Days of Data: 13

Speed Limit: 30

Average Speed: **19.94**

50th Percentile Speed: 19.1

85th Percentile Speed: **23.73**

Pace Speed Range: 16-26

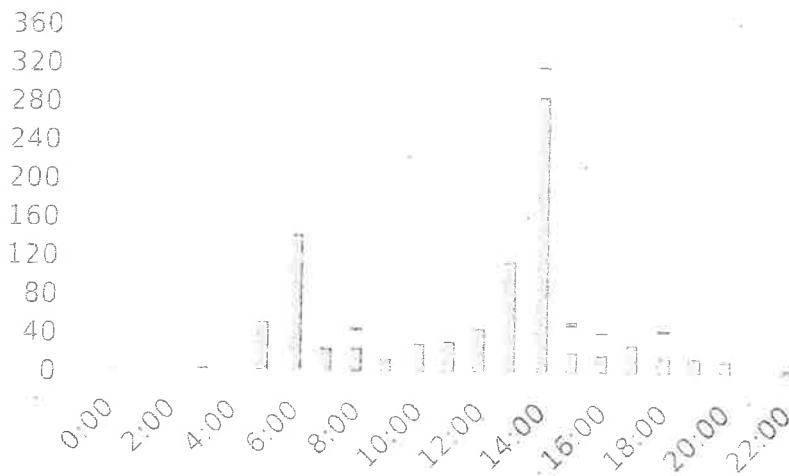
Minimum Speed: 5

Maximum Speed: 54

Display Mode: Dependent Messages

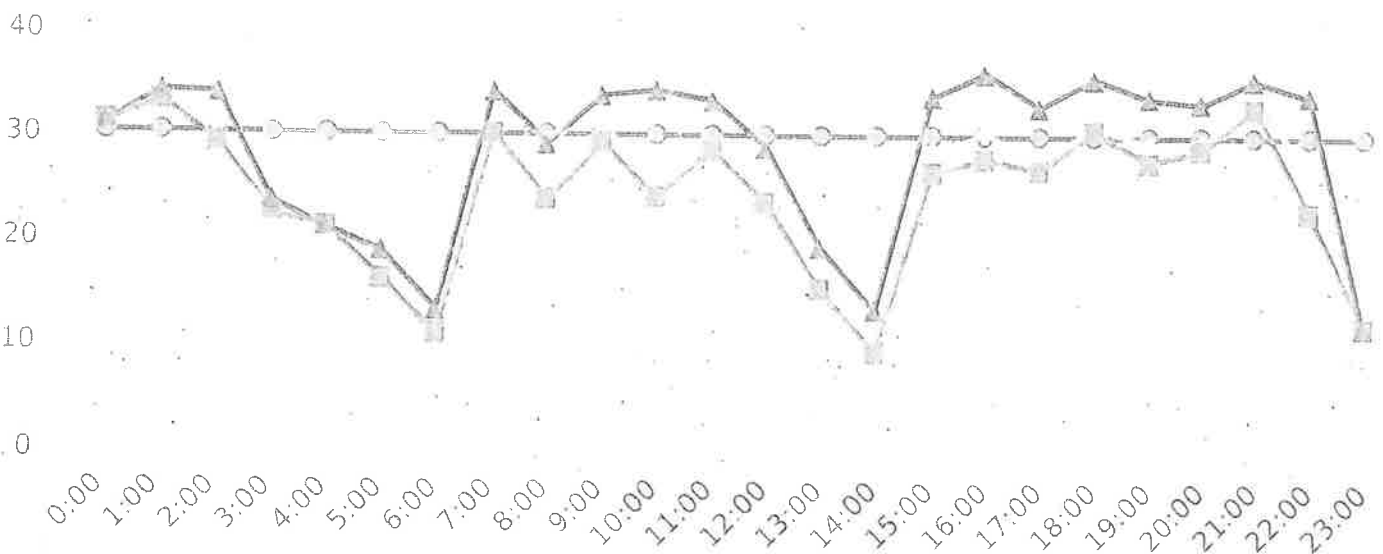
Average Volume per Day: 103.0

Total Volume: 1339

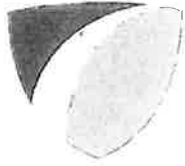


● Violators    Inside Threshold    ○ Compliant

● Vehicles Slowed  
● Other



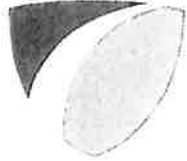
● Speed Limit    Average Speed    ● 50% Speed    ● 85% Speed



Start: 2022-07-02  
End: 2022-08-30  
Times: 0:00-23:59

Violation Threshold: Speed Limit + 10  
Speed Range: 1 to 150

Time	Sign Mode	Speed Limit	Total # Vehicles	Total # Violator	% Violator	Avg # Vehicles	Avg # Violators	Min Speed	Max Speed	Avg Speed	50% Speed	85% Speed	Sign Effectiveness
0:00	Dependent Messages	30	2	0	0.0%	0.2	0.0	29	33	31.0	31.0	31.0	50.0%
1:00	Dependent Messages	30	2	0	0.0%	0.2	0.0	33	34	34.0	33.0	34.0	0.0%
2:00	Dependent Messages	30	5	1	20.0%	0.4	0.1	21	45	30.6	29.0	33.8	20.0%
3:00	Dependent Messages	30	6	0	0.0%	0.5	0.0	16	27	23.2	22.5	23.5	83.3%
4:00	Dependent Messages	30	1	0	0.0%	0.1	0.0	21	21	21.0	21.0	21.0	100.0%
5:00	Dependent Messages	30	86	4	4.7%	7.2	0.3	5	46	18.1	16.2	18.8	51.3%
6:00	Dependent Messages	30	150	2	1.3%	12.5	0.2	5	43	10.9	10.8	13.2	35.2%
7:00	Dependent Messages	30	60	2	3.3%	5.0	0.2	15	44	29.8	30.2	34.2	65.1%
8:00	Dependent Messages	30	47	3	6.4%	3.9	0.3	8	47	25.7	23.7	29.2	57.4%
9:00	Dependent Messages	30	36	2	5.6%	3.0	0.2	16	46	30.9	29.2	33.8	69.4%
10:00	Dependent Messages	30	54	4	7.4%	4.5	0.3	5	47	25.5	24.0	34.3	59.4%
11:00	Dependent Messages	30	64	2	3.1%	5.3	0.2	6	42	27.5	28.7	33.4	67.4%
12:00	Dependent Messages	30	71	2	2.8%	5.9	0.2	5	43	23.6	23.5	28.9	67.6%
13:00	Dependent Messages	30	139	2	1.4%	11.6	0.2	5	47	15.4	15.4	19.3	58.5%
14:00	Dependent Messages	30	321	5	1.6%	26.8	0.4	5	54	10.6	9.4	13.4	42.1%
15:00	Dependent Messages	30	56	8	14.3%	4.3	0.6	5	48	28.5	26.5	33.8	67.9%
16:00	Dependent Messages	30	46	5	10.9%	3.5	0.4	5	47	30.3	27.9	36.1	76.0%
17:00	Dependent Messages	30	53	0	0.0%	4.1	0.0	6	40	27.5	26.7	32.8	64.3%
18:00	Dependent Messages	30	49	6	12.2%	3.8	0.5	6	49	31.0	30.5	35.6	57.1%
19:00	Dependent Messages	30	38	0	0.0%	2.9	0.0	6	39	29.3	27.7	33.7	65.7%
20:00	Dependent Messages	30	25	4	16.0%	1.9	0.3	14	48	29.3	28.8	33.2	92.0%
21:00	Dependent Messages	30	12	2	16.7%	0.9	0.2	20	47	33.3	32.8	35.5	83.4%
22:00	Dependent Messages	30	13	2	15.4%	1.0	0.2	9	53	27.2	22.9	33.9	76.9%
23:00	Dependent Messages	30	3	0	0.0%	0.2	0.0	6	24	12.0	12.0	12.0	33.3%
<b>Total Volumes/ Avg</b>			<b>1339</b>	<b>56</b>	<b>4.2%</b>	<b>109.7</b>	<b>4.8</b>	<b>5</b>	<b>54</b>	<b>25.3</b>	<b>24.3</b>	<b>28.7</b>	<b>60.1%</b>
<b>Total/Avg w/o Feedback</b>			<b>0</b>	<b>0</b>	<b>0</b>	<b>0.0</b>	<b>0.0</b>	<b>n/a</b>	<b>n/a</b>	<b>n/a</b>	<b>n/a</b>	<b>n/a</b>	<b>n/a</b>
<b>Total/Avg w/ Feedback</b>			<b>1339</b>	<b>56</b>	<b>4.2%</b>	<b>109.7</b>	<b>4.8</b>	<b>5</b>	<b>54</b>	<b>25.3</b>	<b>24.3</b>	<b>28.7</b>	<b>60.1%</b>



# Extended Speed Summary

W Walker (southbound), SB  
(Trailer)

Start: 2022-06-30  
End: 2022-08-28  
Times: 0:00-23:59

Violation Threshold: Speed Limit + 10  
Speed Range: 1 to 150

## Overall Summary

Total Days of Data: 11

Speed Limit: 30

Average Speed 23.01

50th Percentile Speed: 23.93

85th Percentile Speed 27.69

Pace Speed Range: 20-30

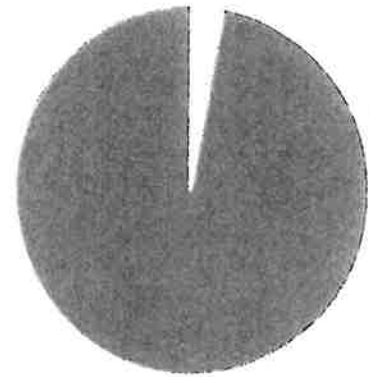
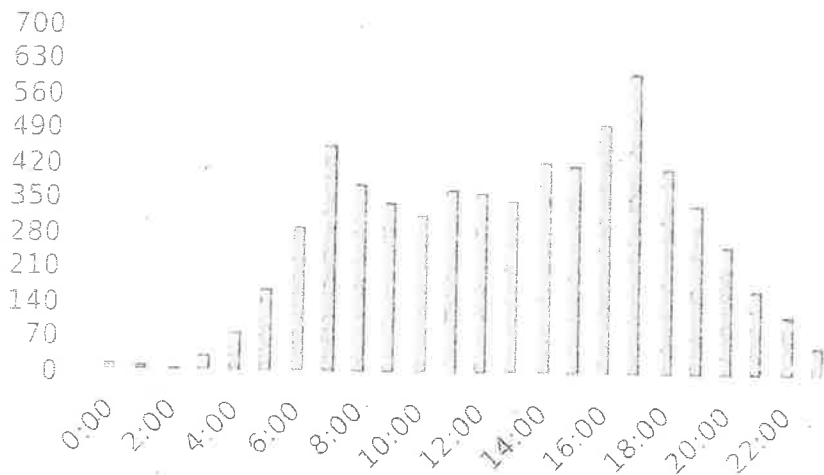
Minimum Speed: 10

Maximum Speed: 42

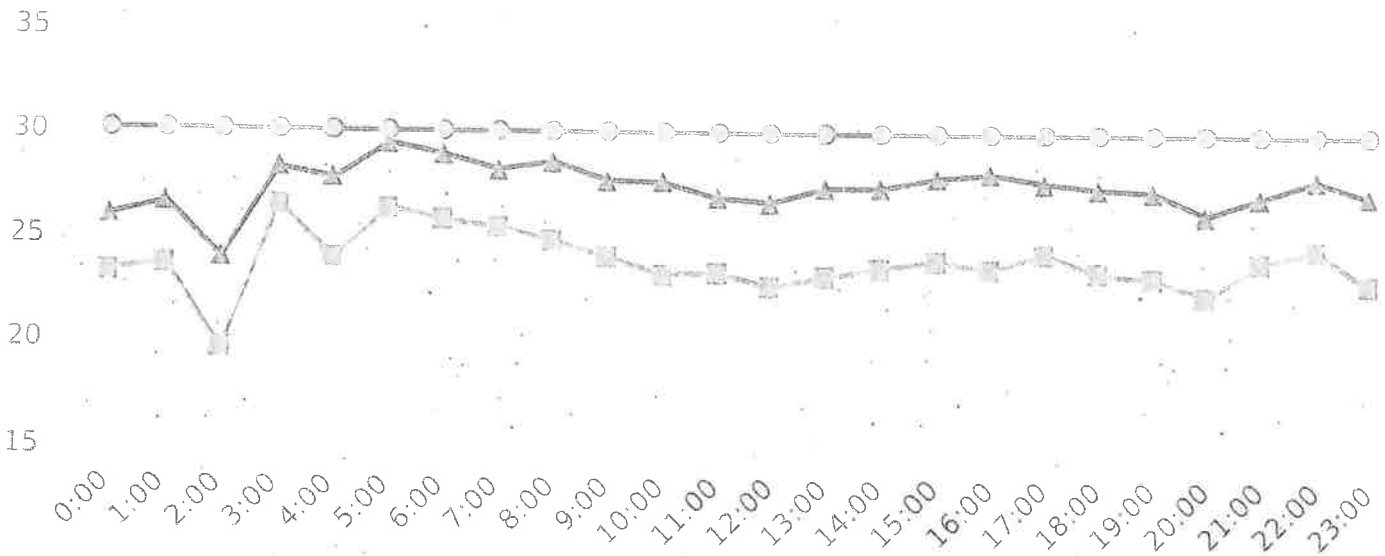
Display Mode: Speed Display

Average Volume per Day: 630.5

Total Volume: 6935

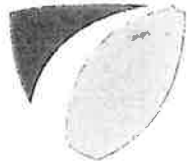


● Violators    
 ● Inside Threshold    
 ● Compliant    
 ● Vehicles Slowed Other



● Speed Limit    
 Average Speed    
 ● 50% Speed    
 ● 85% Speed





Start: 2022-06-30

End: 2022-08-28

Times: 0:00-23:59

Violation Threshold: Speed Limit + 10

Speed Range: 1 to 150

Time	Sign Mode	Speed Limit	Total # Vehicles	Total # Violator	% Violator	Avg # Vehicles	Avg # Violators	Min Speed	Max Speed	Avg Speed	50% Speed	85% Speed	Sign Effectiveness
0:00	Speed Display	30	23	0	0.0%	2.3	0.0	10	31	23.0	23.3	25.9	0.0%
1:00	Speed Display	30	17	0	0.0%	1.9	0.0	13	33	23.9	23.6	26.5	0.0%
2:00	Speed Display	30	11	0	0.0%	1.2	0.0	10	29	21.7	19.5	23.9	0.0%
3:00	Speed Display	30	37	0	0.0%	4.1	0.0	10	32	26.5	26.5	28.2	0.0%
4:00	Speed Display	30	86	0	0.0%	9.6	0.0	10	33	23.9	23.9	27.7	0.0%
5:00	Speed Display	30	191	0	0.0%	21.2	0.0	10	34	25.7	26.4	29.4	1.1%
6:00	Speed Display	30	325	0	0.0%	36.1	0.0	10	37	24.8	25.8	28.9	2.7%
7:00	Speed Display	30	483	0	0.0%	53.7	0.0	10	34	24.4	25.4	28.2	3.1%
8:00	Speed Display	30	402	1	0.2%	44.7	0.1	10	41	24.0	24.8	28.6	3.0%
9:00	Speed Display	30	358	0	0.0%	39.8	0.0	10	33	23.0	24.0	27.7	3.1%
10:00	Speed Display	30	335	0	0.0%	37.2	0.0	10	33	22.5	23.3	27.6	3.4%
11:00	Speed Display	30	383	0	0.0%	42.6	0.0	10	35	22.1	23.3	26.9	2.2%
12:00	Speed Display	30	374	0	0.0%	41.6	0.0	10	37	21.8	22.7	26.7	2.5%
13:00	Speed Display	30	373	0	0.0%	41.4	0.0	10	36	22.3	23.2	27.4	2.4%
14:00	Speed Display	30	447	0	0.0%	49.7	0.0	10	40	22.5	23.6	27.4	4.4%
15:00	Speed Display	30	453	1	0.2%	50.3	0.1	10	42	22.8	23.9	27.9	2.2%
16:00	Speed Display	30	534	0	0.0%	53.4	0.0	10	35	22.8	23.6	28.1	3.9%
17:00	Speed Display	30	642	0	0.0%	64.2	0.0	10	38	22.8	24.3	27.7	2.7%
18:00	Speed Display	30	438	0	0.0%	43.8	0.0	10	36	22.6	23.4	27.5	2.9%
19:00	Speed Display	30	364	0	0.0%	36.4	0.0	10	37	22.5	23.2	27.3	3.7%
20:00	Speed Display	30	274	0	0.0%	27.4	0.0	10	36	21.8	22.3	26.2	2.5%
21:00	Speed Display	30	183	0	0.0%	18.3	0.0	10	37	22.9	23.9	27.1	2.2%
22:00	Speed Display	30	136	0	0.0%	13.6	0.0	11	35	24.1	24.6	27.9	1.4%
23:00	Speed Display	30	66	0	0.0%	6.6	0.0	10	31	23.2	22.9	27.1	4.5%
<b>Total Volumes/ Avg</b>			<b>6935</b>	<b>2</b>	<b>0.0%</b>	<b>741.0</b>	<b>0.2</b>	<b>10</b>	<b>42</b>	<b>23.2</b>	<b>23.8</b>	<b>27.4</b>	<b>2.2%</b>
<b>Total/Avg w/o Feedback</b>			<b>0</b>	<b>0</b>	<b>0</b>	<b>0.0</b>	<b>0.0</b>	<b>n/a</b>	<b>n/a</b>	<b>n/a</b>	<b>n/a</b>	<b>n/a</b>	<b>n/a</b>
<b>Total/Avg w/ Feedback</b>			<b>6935</b>	<b>2</b>	<b>0.0%</b>	<b>741.0</b>	<b>0.2</b>	<b>10</b>	<b>42</b>	<b>23.2</b>	<b>23.8</b>	<b>27.4</b>	<b>2.2%</b>